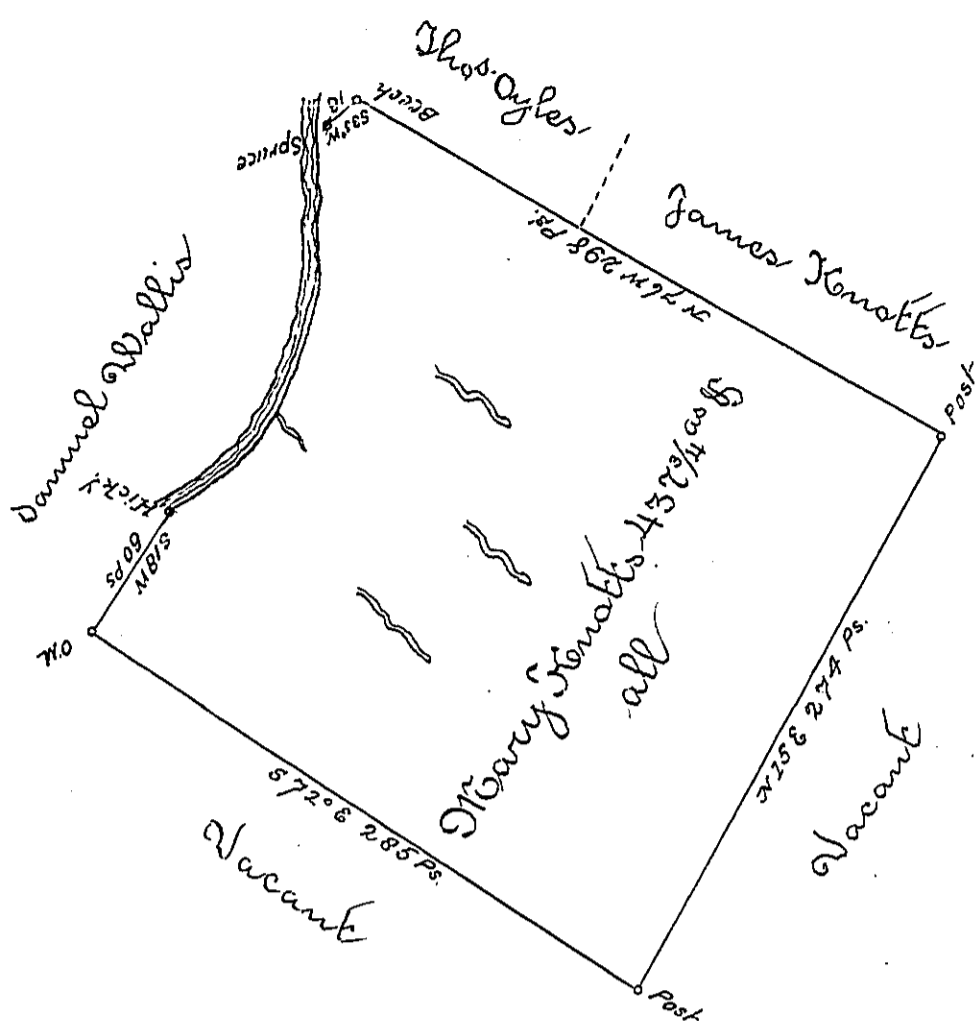


The courses &c down  
the creek from the  
Hickry to the Spruce

S 55° E 18 P°  
N 28 E 24  
N 8 E 70  
N 8 W 78 Spruce  
190



Situated on the East side of South west branch of Frankstown branch of Juniata River, in Woodberry Township Bedford County containing 43 3/4 acres & allowance of six per Cent for Roads &c Surveyed the 17th day of September 1795 for Mary Knotts on Warrant Dated the 17th day August 1795.

To Daniel Brodhead Esquire S. J.

George Woods Junr

19. 5/

IN TESTIMONY that the above is a copy of the original remaining on file in the Department of Internal Affairs of Pennsylvania, made conformably to an Act of Assembly approved the 16th day of February, 1833, I have hereunto set my Hand and caused the Seal of said Department to be affixed at Harrisburg, this fifth day of November 1895.

*James W. Fatta*  
Secretary of Internal Affairs.